



Engineered Systems Associates
Mechanical Engineers

Dwayne Sudweeks
 1355 East Center - Pocatello, Idaho 83201
 Phone: (208) 233-0501 Fax: (208) 233-0529 email: esa@engsystems.com

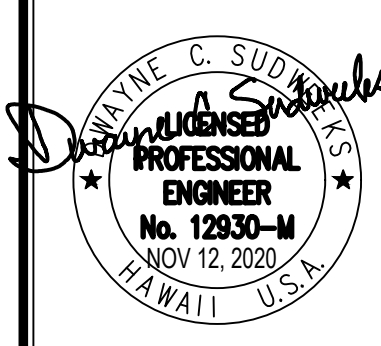
HVAC UPGRADE FOR:
LDS LAIE 1,8,9

PROPERTY # 521-1514
 ZONE 5 | SEC 5 | PLAT 004 | PARCEL 15

55-1109 LANIHULI ST
 LAIE, HAWAII

MECHANICAL DETAILS

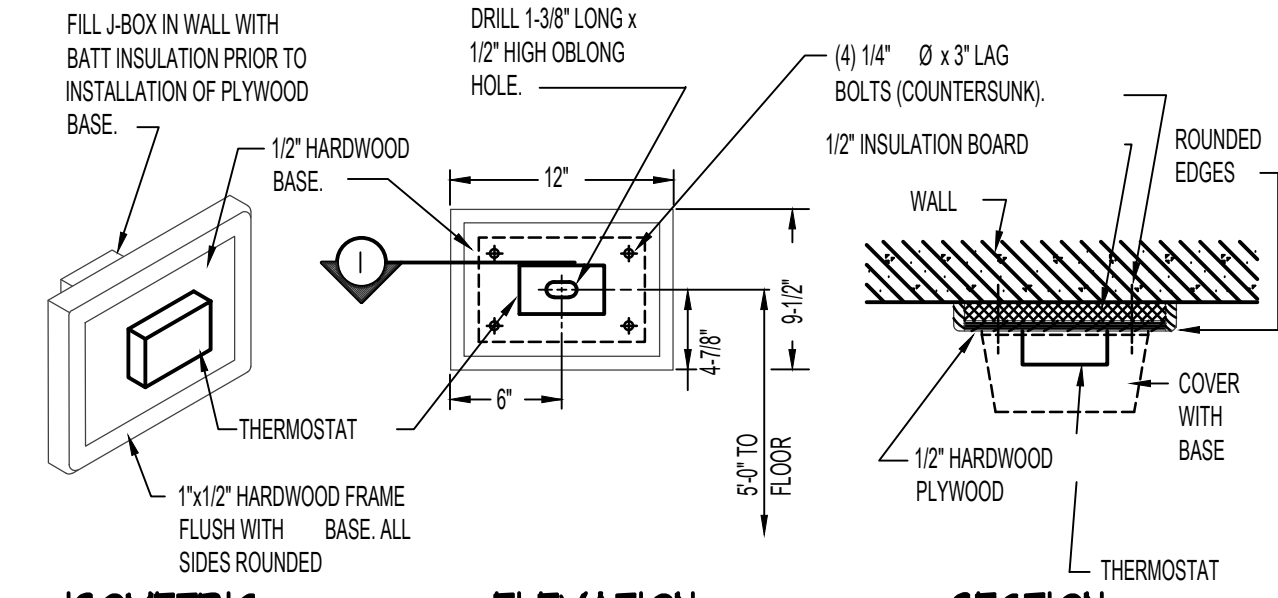
PROJECT:



DRWN. BY: T DAVIS
 CKD. BY: D.SUDWECKS
 JOB NO: 20040
 DATE: NOV 2020

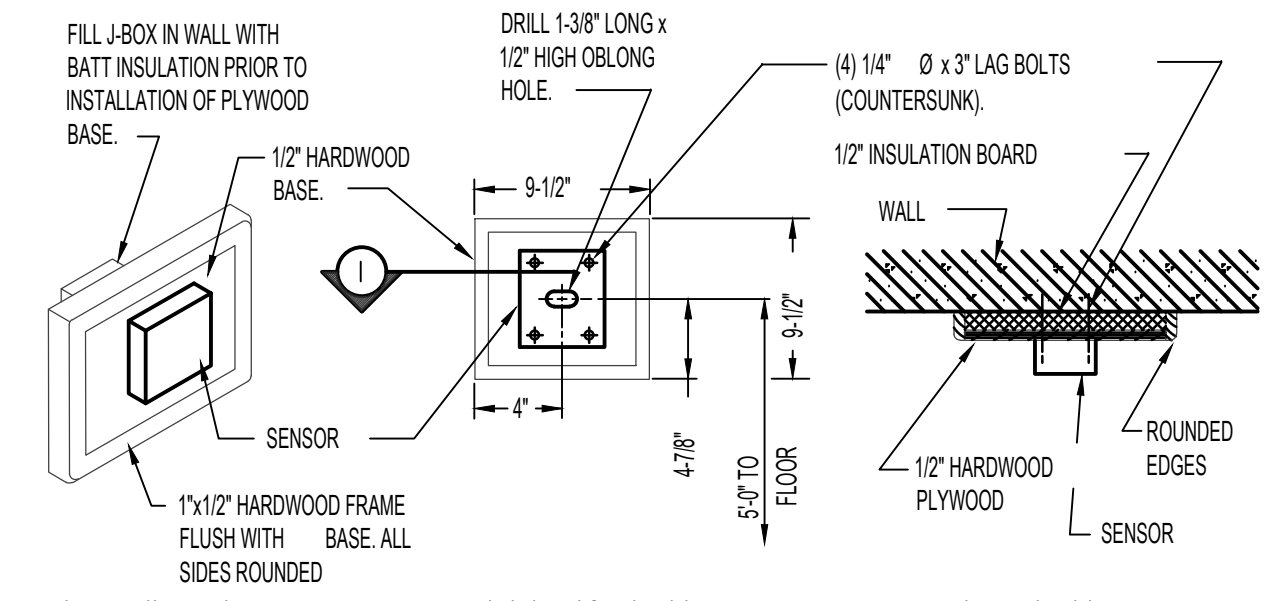
SHEET:
ME3.1
 OF: 13

- NOTES:
 1- FINISH OF HARDWOOD FRAME AND HARDWOOD PLYWOOD PANEL TO MATCH OTHER WOOD TRIM OF FRAMES.
 2- SEE MECHANICAL SHEETS FOR LOCATIONS OF THERMOSTATS.

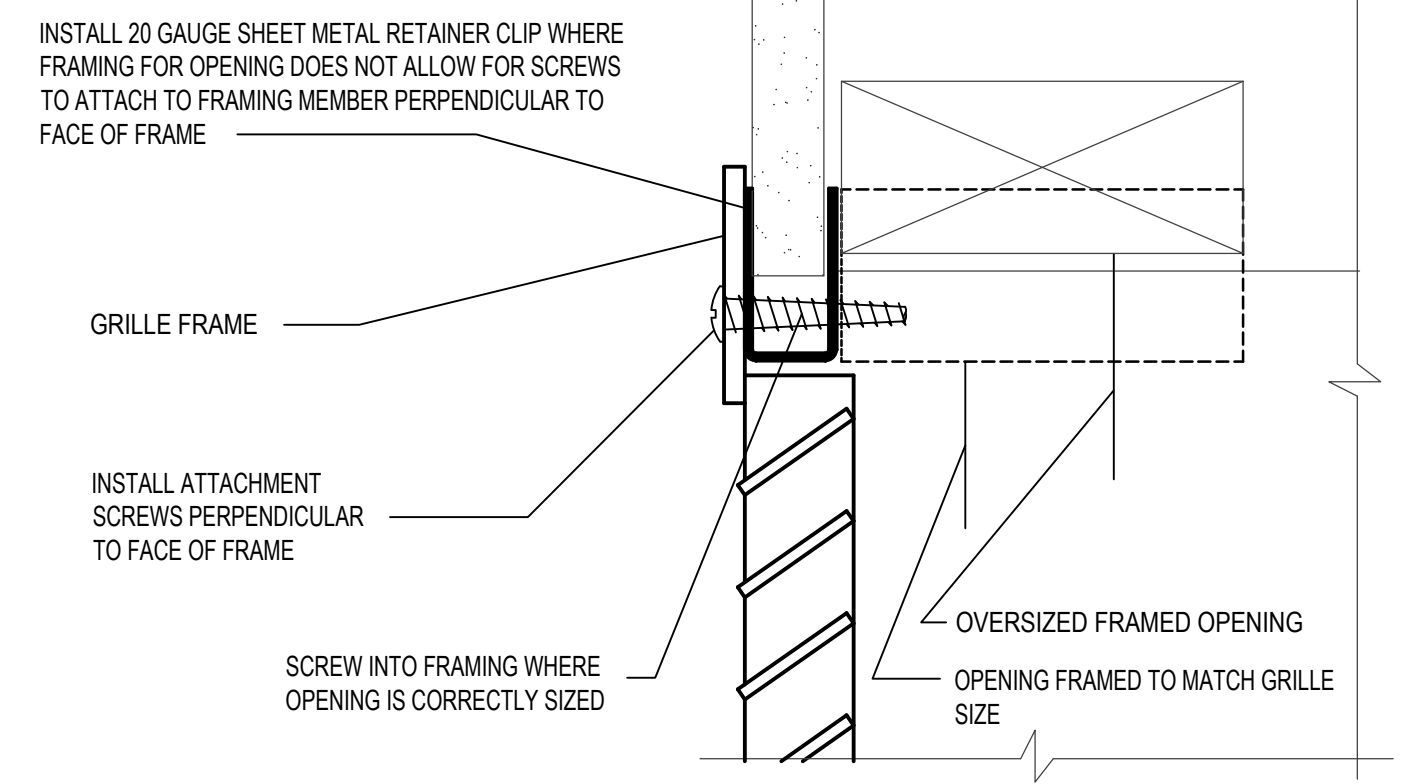


ISOMETRIC ELEVATION SECTION
INSULATED BASE FOR THERMOSTAT
 NO SCALE

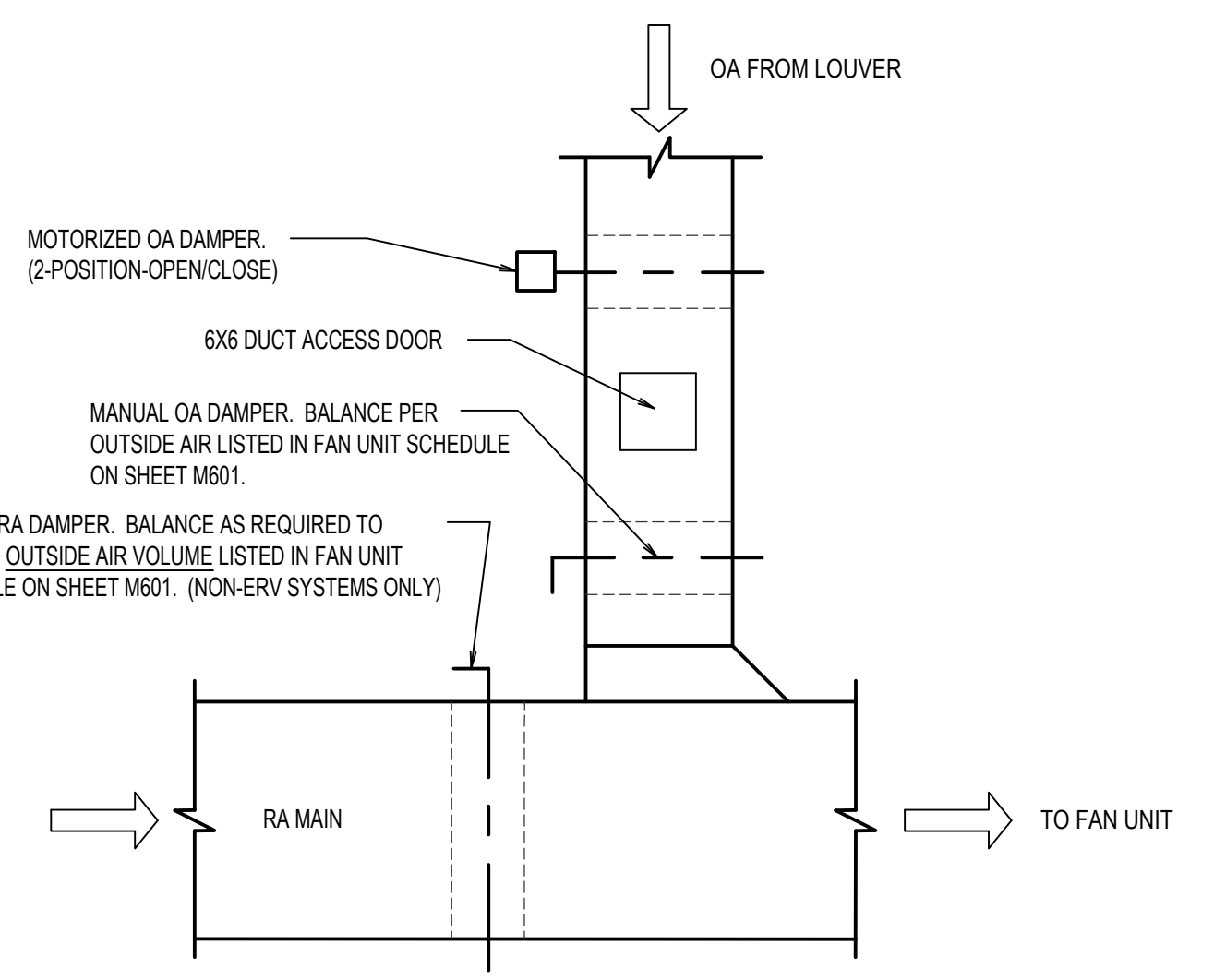
- NOTES:
 1- FINISH OF HARDWOOD FRAME AND HARDWOOD PLYWOOD PANEL TO MATCH OTHER WOOD TRIM OF FRAMES.
 2- SEE MECHANICAL SHEETS FOR LOCATIONS OF SENSORS.



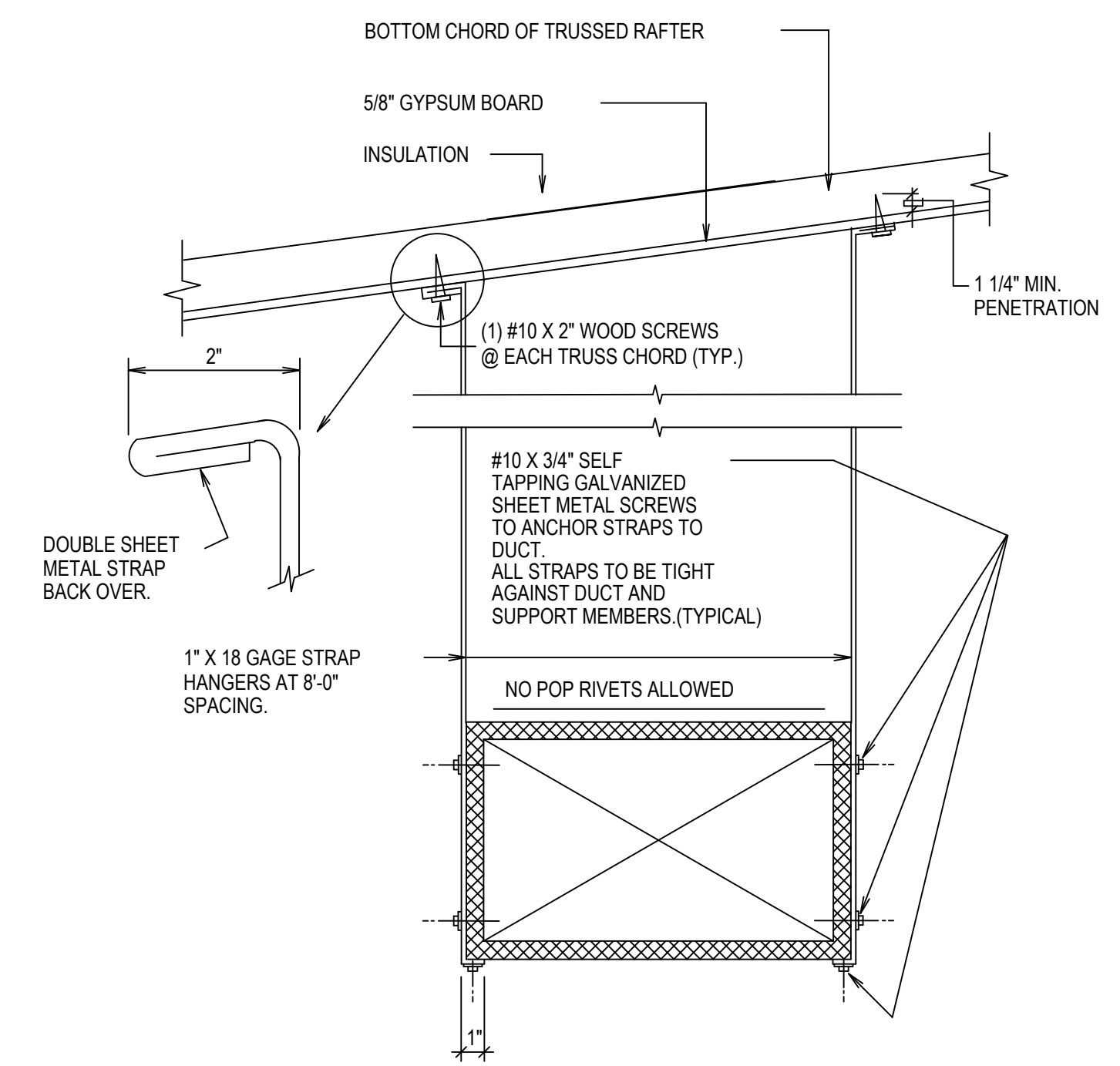
ISOMETRIC ELEVATION SECTION
INSULATED BASE FOR SENSORS
 NO SCALE (ALL REMOTE SENSORS THRU-OUT BUILDING)



GRILLE ATTACHMENT DETAIL
 SCALE: NONE

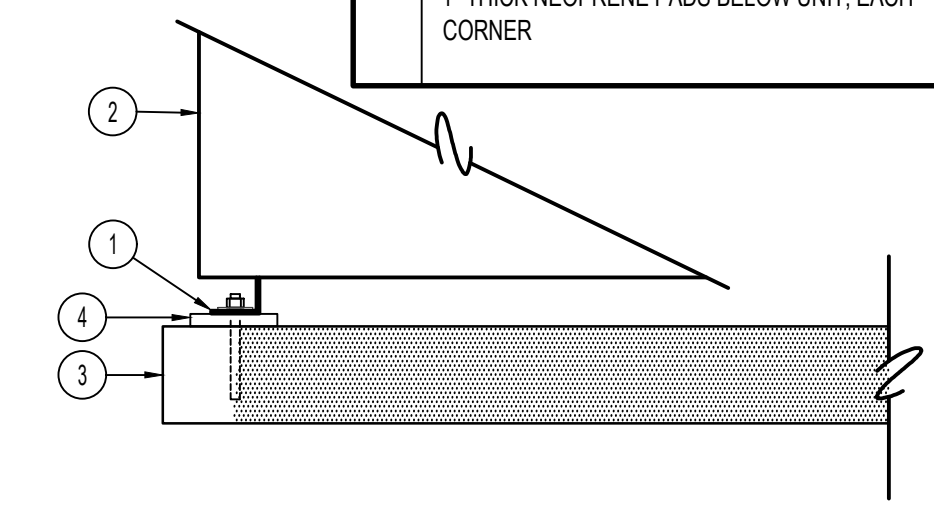


TYPICAL OUTSIDE AIR DUCT DETAIL
 SCALE: NONE

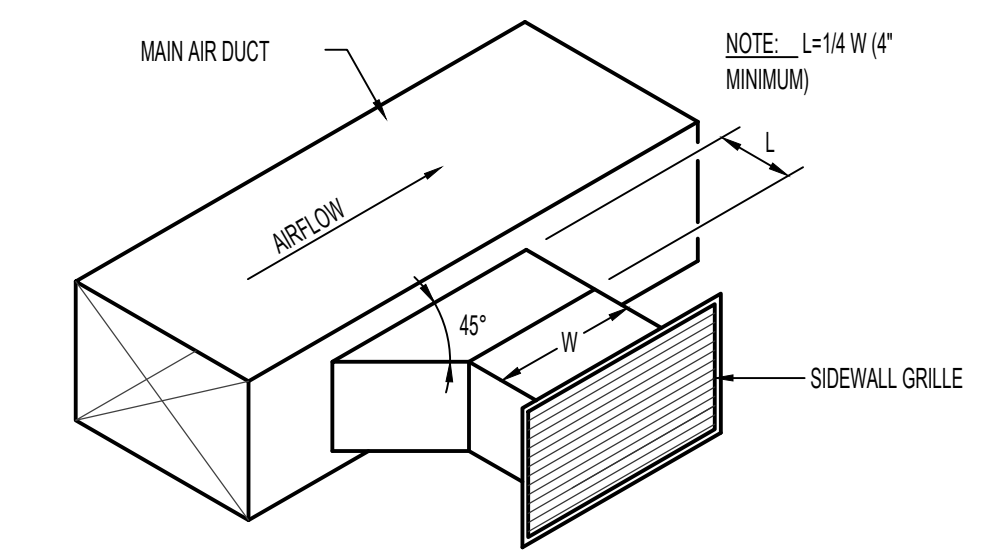


DUCT STRAP HANGER DETAIL
 SCALE: NONE

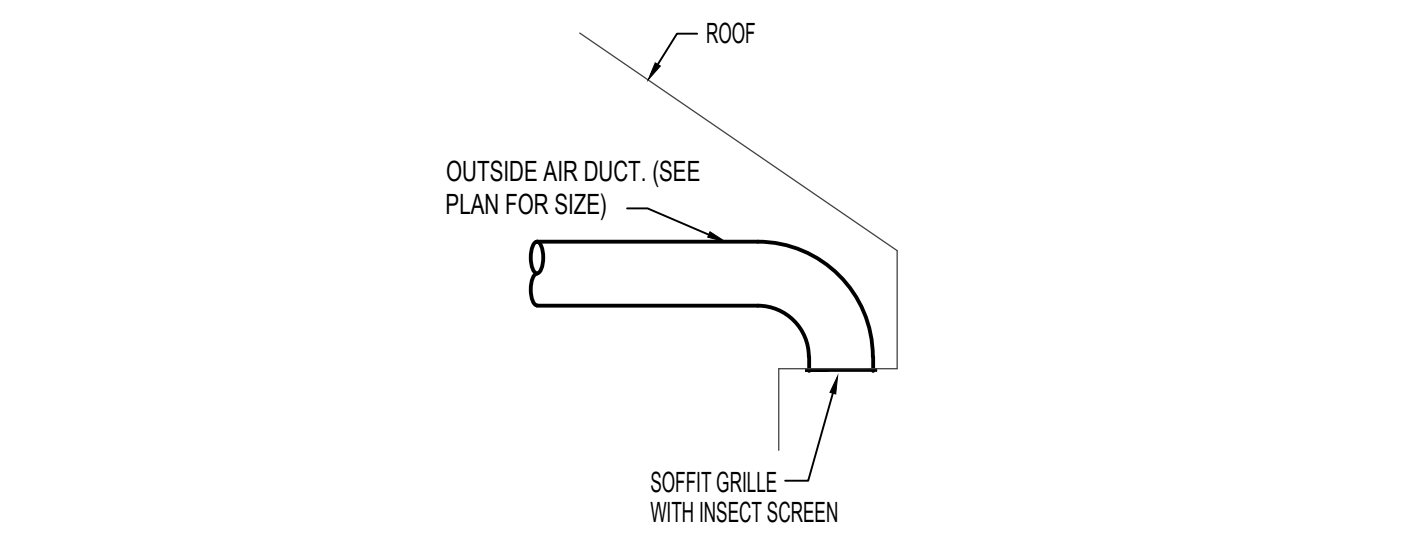
- KEYNOTES:**
- HILTI HIT-RE 500 V3 EPOXY SYSTEM W/ (1) HAS-R 316SS3/8 ANCHOR, INSTALL PER MANUFACTURER RECOMMENDATIONS, SPECIAL INSPECTION REQUIRED. BOLTS TO BE 316 SS, 3/8" DIA X 2-1/2"
 - CONDENSING UNIT BY CONTRACTOR
 - CONCRETE PAD BY CONTRACTOR
 - 1" THICK NEOPRENE PADS BELOW UNIT, EACH CORNER



CONDENSING UNIT MOUNTING DETAIL
 NO SCALE



SIDEWALL GRILLE CONNECTION DETAIL
 NO SCALE

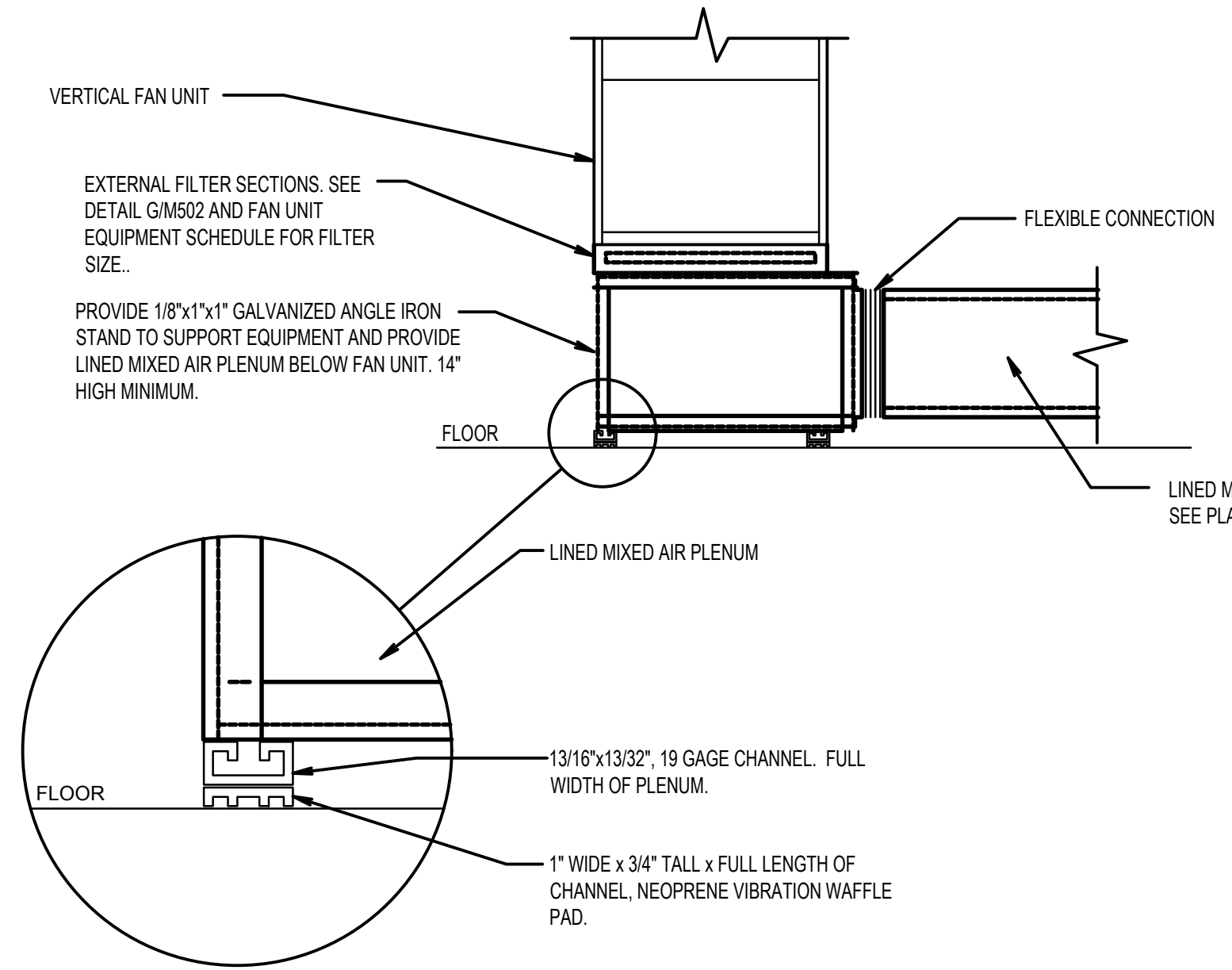


FRESH AIR INTAKE AT SOFFIT DETAIL
 NO SCALE

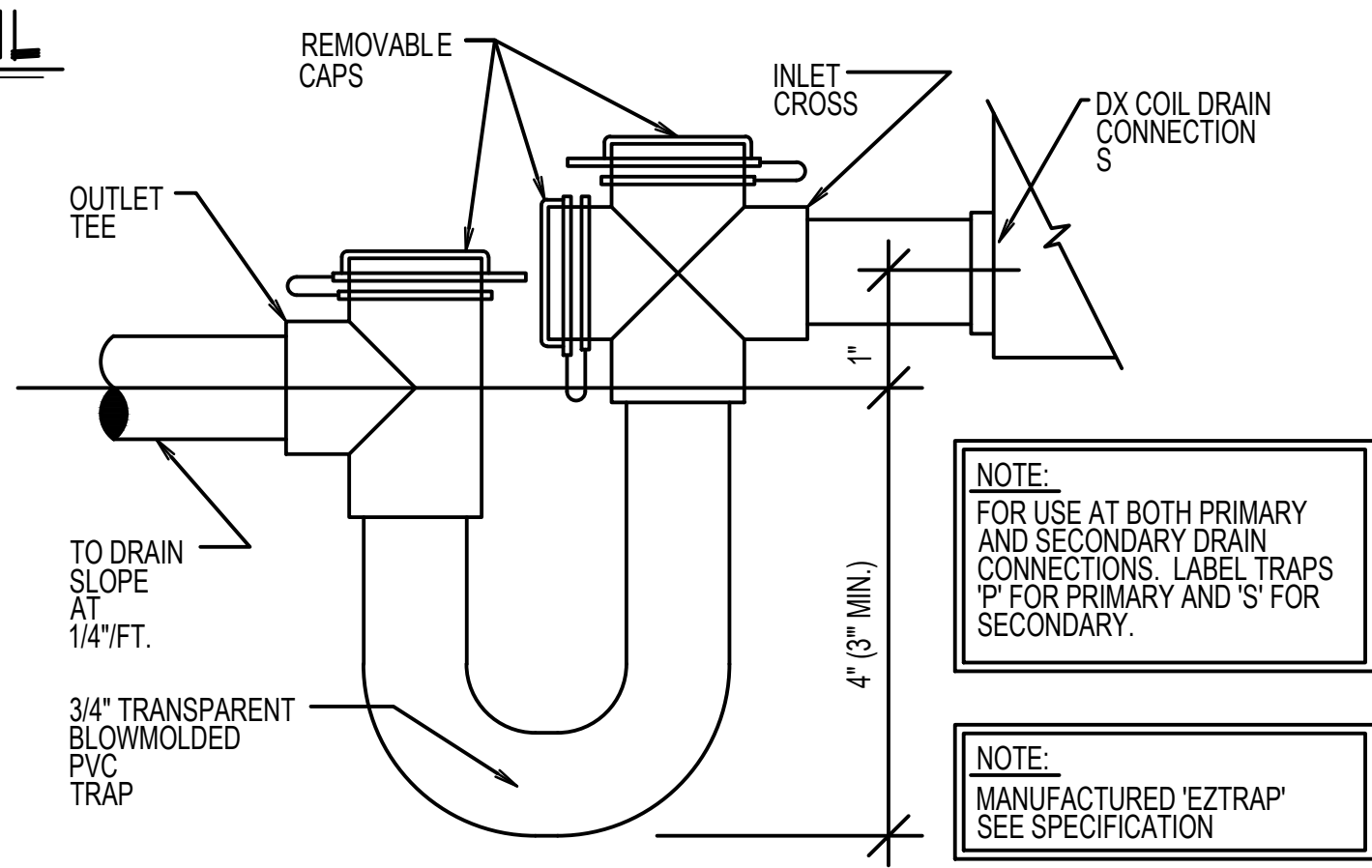
DIMENSION OF LONGEST SIDE INCHES	SHEET METAL GAGE (ALL FOUR SIDES)	MINIMUM REINFORCING ANGLE SIZE AND MAXIMUM LONGITUDINAL SPACING BETWEEN TRANSVERSE JOINTS &/OR INTERMEDIATE REINFORCING	TRANSVERSE REINFORCING (1)				
			AT JOINTS				
			MIN. H. IN.	DRIVE SLIP PLAIN S SLIP	HEMMED S SLIP	ALTERN BAR SLIP	REIN-FORCED BAR SLIP
			RECOM-MENDED GAGE	RECOM-MENDED GAGE	RECOM-MENDED GAGE	RECOM-MENDED GAGE	
UP THRU 12	26	NONE REQUIRED	1	26	26	24	24
13 - 18	24	NONE REQUIRED	1	24	24	24	24
19 - 30	24	1"x1"x1/8" @ 60 IN	1	-	24	24	24
31 - 36	22	1"x1"x1/8" @ 60 IN	1	-	-	22	22

(1) TRANSVERSE REINFORCING SIZE IS DETERMINED BY DIMENSION OF SIDE TO WHICH ANGLE IS APPLIED.
 (2) LONGITUDINAL JOINTS TO BE PITTSBURG OR SNAP LOCK TYPE.

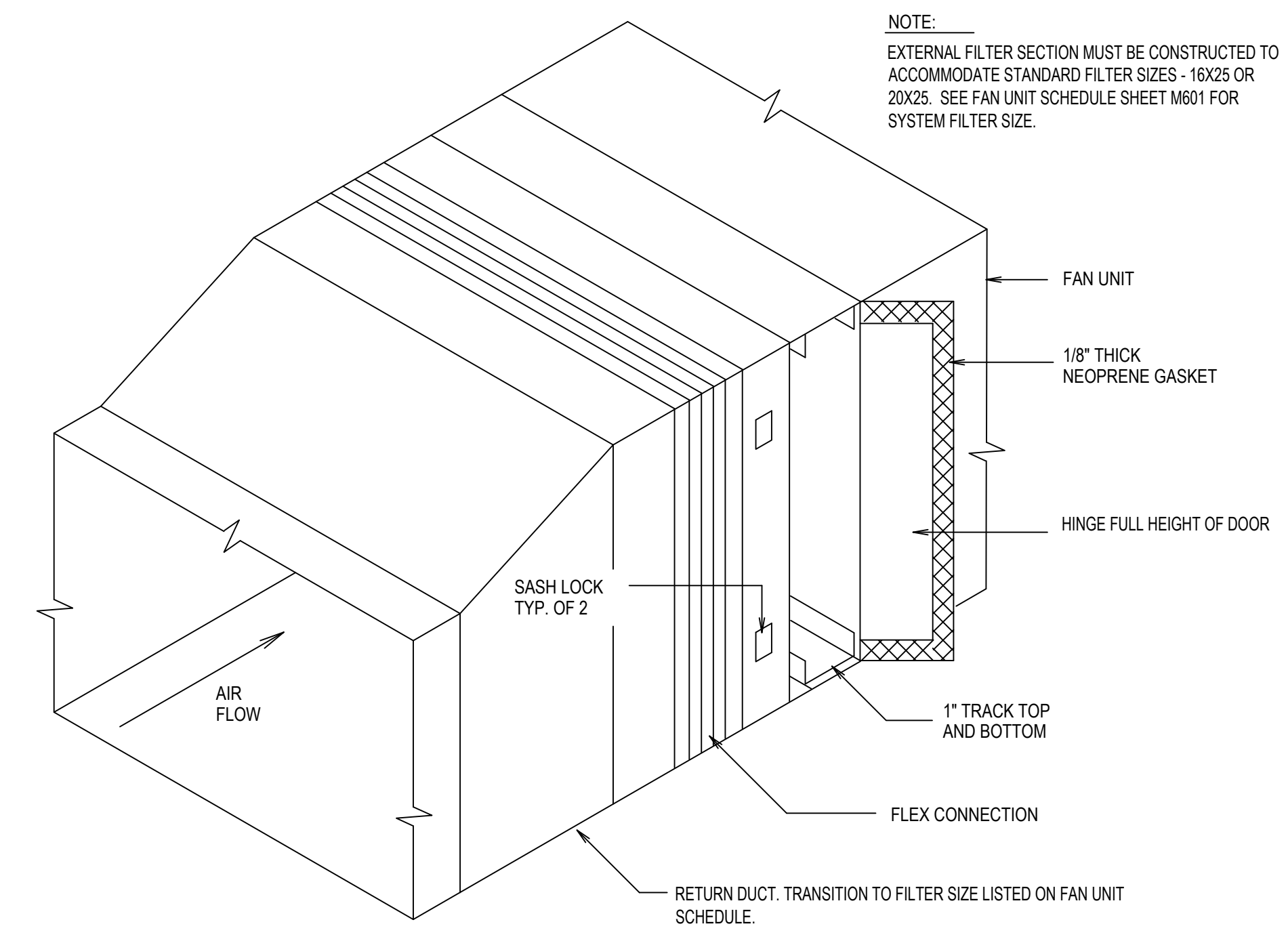
DUCT CONSTRUCTION DETAIL
 SCALE: NONE



VERTICAL FAN UNIT SUPPORT DETAIL
 SCALE: NONE



DX COIL CONDENSATE DRAIN DETAIL
 SCALE: NONE



EXTERNAL FILTER SECTION DETAIL
 SCALE: NONE

DO NOT BLOCK FILTER ACCESS WITH CONDUIT, THREADED ROD, OR CONDENSATE DRAINS.